

FALL-WINTER 2025 NEW ARRIVALS!



NEW SHADE! XTREME PUDDING+ COVER BLUSH

Free from Di-HEMA and HEMA ingredients

Pudding-like Cover Blush shade

Discover the newest member of the Xtreme Pudding+ family – the elegant Cover Blush shade! This medium-density builder gel has a soft, pudding-like texture and is self-leveling, which makes application quick and easy – even in colder months. Its soft, rosy cover shade gives a natural look while providing excellent coverage and sculptability. It is suitable for nail building, refills, and even no-file techniques, making it an ideal companion for both salon work and competition-level designs. It naturally forms the desired curve, making the final result not only aesthetically pleasing but also time-saving. The new luxury rose gold-silver jar is not only elegant but also practical – a worthy addition to the latest trends.

Curing time: 2-3 min in UV, 1-2 min in LED.

Bending time: 20-25 sec in UV, 8-10 sec in LED.

We recommend using a larger, softer brush such as the Nero Merlo III or the Xtreme Gel brush.

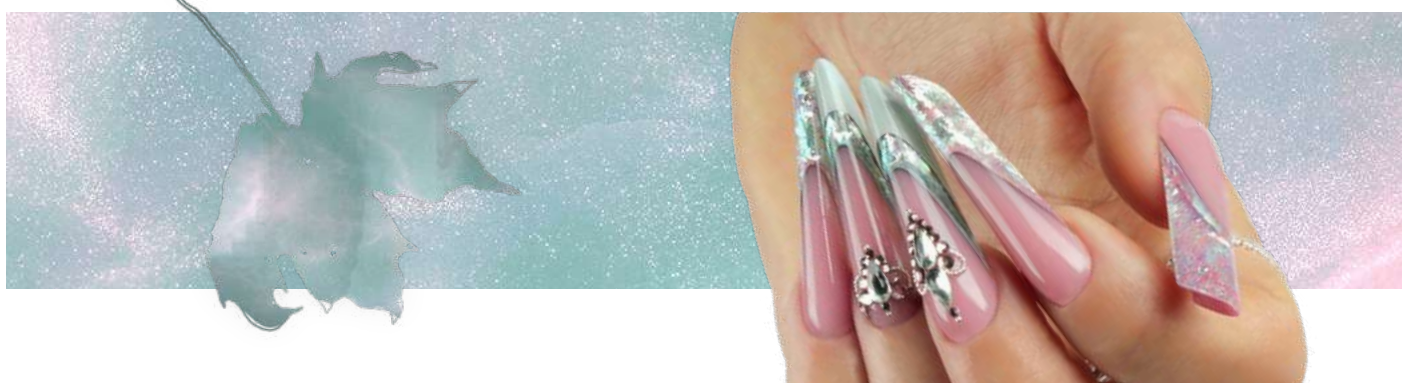
5ml
15ml
50ml

Free from
Di-HEMA and
HEMA ingredients



New!
Cover Blush

NEW SHADE!



FALL-WINTER 2025 NEW ARRIVALS!



NEW COLORS! COMPACT PRO BASE&BUILDER

Free from Di-HEMA and HEMA ingredients

Discover the Compact Pro Base & Builder Gel, which provides even **stronger adhesion** for long-lasting, perfect nails. It has a slightly thicker density but is still easy to control with the brush, making every stroke precise and confident. **Ideal for medium-length nail extensions using forms, creating a stable C-curve**, as well as perfect for base coating, nail strengthening, or securely attaching rhinestones.

This fall, natural-looking milky and cover shades are debuting: Milky Rose: a pale pinkish-white with a milky effect, delicate and refined.

Milky Pink: a pastel, light pink that adds just a touch of color.

Baby Pink: classic baby pink, soft and natural-looking.

Cover Pink: a medium-toned pink, perfect as a nude base.

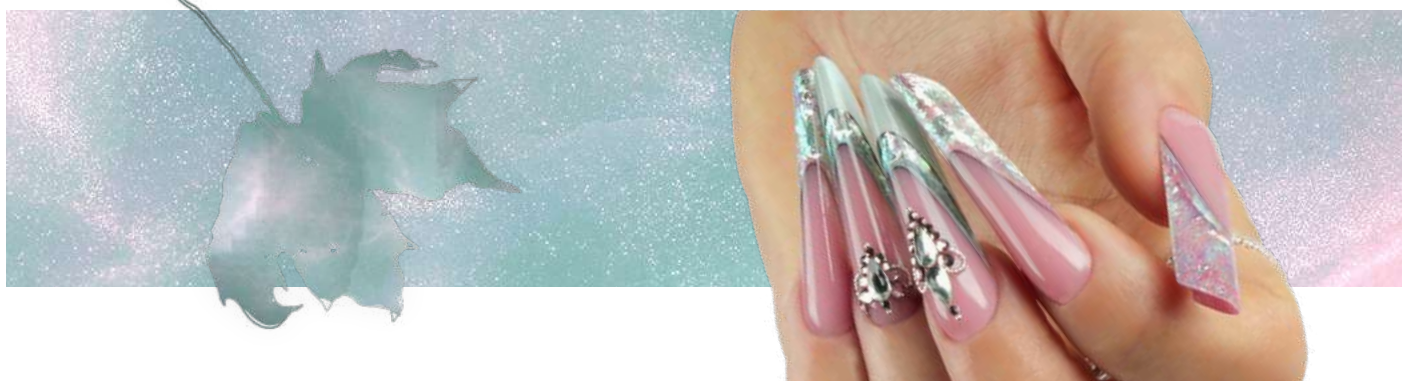
Cover Nude: a warmer, browner shade that matches the natural nail bed color.

Soluble.

Full curing time: 2-3 min in UV, 1-2 min in LED.

8ml

13ml



FALL-WINTER 2025 NEW ARRIVALS!



NEW COLORS!

3 STEP CRYSTALAC TREND COLORS

Free from Di-HEMA and HEMA ingredients

This autumn's colors come back fresh, modern, and feminine. Discover the newest 3 STEP collection, which fits perfectly between cool mornings and sunny afternoons. **3S247** – an elegant, clean, and modern light gray. **3S248** – a fresh but soft smoky mint tone. **3S249** – a romantic and feminine powdery mauve pink, a forever favorite for a soft and balanced look. **3S250** – a bright pink shade that is perfect for Indian summer.

4ml
8ml



New! 3S247
Gray Dew



New! 3S248
Smoky Mint



New! 3S249
Powdery
Mauve



New! 3S250
Indian
Summer

NEW
COLORS!



Free from
Di-HEMA and
HEMA ingredients



NEW! LIMITED!

Blush&Breeze

3 STEP CrystaLac Collection

The perfect blend of soft elegance and refreshing vibes. This autumn, the Blush & Breeze Collection brings you pastel-toned, harmonious shades — all packed in a box that transforms into a display.

Contents:

3S247 Grey Dew, 3S248 Smoky Mint, 3S249 Powdery Mauve,
3S250 Indian Summer

4x4ml



NEW! LIMITED!

FALL-WINTER 2025 NEW ARRIVALS!



BRAND NEW! 3 STEP CRYSTALAC DIVA

Free from DI-HEMA and HEMA ingredients

The latest collection from Crystal Nails has arrived: Diva. With the cooler autumn season approaching, **shiny, flaky, magical shades** come back into focus, and this collection brings exactly that to you.

Stunning flaky sparkle, glossy shine, and iridescent magic—each shade embodies stylish elegance that will keep your clients coming back again and again! **3SD1 Ice Veil** – A clear, icy translucent base with white flakes, perfect if you desire a frosty, elegant look. **3SD2 Sparkling Mint** – A fresh mint green shade with pink-gold flakes. Refreshing and unique. **3SD3 Peach Glaze** – Shimmering opalescent flakes on a pink translucent base, creating a romantic and charming effect with a little extra sparkle. **3SD4 Hawthorn Glitter** – Warm mauve-pink tones with intense, light-reflecting flakes.

Curing time: 2-3 min in UV, 1-2 min in LED.

4ml
8ml

*Free from
DI-HEMA and
HEMA ingredients*



New! 3SD1
Ice Veil



New! 3SD2
Sparkling Mint



New! 3SD3
Peach Glaze



New! 3SD4
Hawthorn
Glitter



BRAND NEW!

NEW! LIMITED! Diva 3 Step Crystalac Collection

The autumn-winter 3 STEP Crystalac shades are now available as a set, so you can get all four dazzling colors at once – at a better price, in one package! A perfect choice if you don't want to miss out on all the season's trendy colors. The box can be converted into a display.

Contents: 3SD1, 3SD2, 3SD3, 3SD4

4x4ml



NEW! LIMITED!

FALL-WINTER 2025 NEW ARRIVALS!



NEW SHADE!

ELASTY HARDENER MILKY WHITE

Flexible, soluble brush-on hardener and liquid builder gel with outstanding adhesion

Introducing the new Milky White shade in the Elastic Hardener family! This milky white color fits perfectly with the clean, simple trends of autumn and winter. **This flexible, soluble brush-on base gel** offers **excellent adhesion**, making it ideal for everyday salon work. Suitable for strengthening as well as extending nails in sizes S and M.

CN tip: Use it to fix metal decorations, microbeads, rhinestones, and stones on the nail surface. It also works well for adding nail art decorations. For decorations that are less durable, apply a thin layer under the top gel (great for chrome powders, watercolor painting, and water decals).

Curing time: 2-3 min in UV, 1-2 min in LED.

8ml
13ml



New!
Milky
White

NEW PACKAGING! 2 STEP

SmartGummy Rubber Base Gel

The gummy Compact Base Gel - in a jar

Innovative texture Base Gel characterized by **extremely easy spreadability, high flexibility, and strong adhesion**. Creating a smooth surface is a breeze because the material easily levels out with little help, quickly eliminating surface irregularities. It holds the desired curve well, yet does not easily run into the grooves, which is a great help **for those who prefer to work with medium-soft materials**. It ensures fast work pace and minimal corrections. Its flexibility stands out among all Base Gels, making it extremely durable as it adapts to all natural nail movements, better resisting mechanical impacts than its peers. **Its adhesion is outstanding**, placing it among the top Base Gels in terms of adhesion strength.

After curing, the surface remains sticky; the top coat is the Cool Top Gel.

When used alone, recommended for mini-length nails reaching the fingertips.

Curing time: 2-3 min in UV, 1-2 min in LED (depending on lamp strength)

30ml



Free from
DI-HEMA
and HEMA
ingredients



New! Nr01
Baby Pink



New! Nr02
Milky White



New! Nr14
Milky Rose

FALL-WINTER 2025 NEW ARRIVALS!



RENEWED!

ART GEL PRO

(white, black, blue, yellow, red)

A creamy, fine-textured, highly pigmented decoration gel that makes painting even easier!

The classic Art Gel Pro has arrived in an upgraded version — creamier, more pigmented, and easier to handle! The **super-pigmented, non-cleansing formula** provides full coverage even in a thin layer, remains shiny after curing, and does not require extra top coat. It gives an immediate glossy and vivid color after curing without fixation. The shades can be mixed to create any custom color.. Its creamy, thick consistency prevents it from spreading, making it **ideal for contours, thin lines, geometric and abstract patterns, or even detailed hand paintings with stencils**. Colors blend easily — perfect for the one-move technique as well.

Tip for use: Try using a size 0 or Art brush for maximum precision; the brush glides almost by itself on the surface, lines do not break, perfect for detailed patterns.

CN Tip: Use it extra thinly so the material cures through — only a minimal amount on the brush is enough! Use Art Gel decoration gel exclusively for decorations! For full coverage and free edge work, Royal Gel gels are best. With a sponge-head ombre brush, perfect color gradients can be created with Art Gel decoration gels! Cure in LED lamp for faster work!

Curing time: 3-4 min in a UV lamp, 2-3 min in a LED lamp.

3ml



New!
White



New!
Black



New!
Blue



New!
Yellow



New!
Red

RENEWED!

Free from
DI-HEMA
and HEMA
ingredients



FALL-WINTER 2025 NEW ARRIVALS!



NEW COLORS! TIGER EYE LUX CRYSTALAC

Free from DI-HEMA and HEMA ingredients

An autumn magic dipped in gold. The shades of the Tiger Eye Lux collection are deep, magnetic gel polishes that shimmer amazingly in the light with every movement. Inspired by nature, the elegant tones perfectly complement the autumn-winter mood:

Maple – A golden, caramel brown shade that enchants anyone with its warm glow and subtle elegance.

Mulberry – A deep, burgundy-purple tone with sparkle, a true special that creates a gently dramatic effect.

Pine – A dark pine green color with silvery light play; a nature-inspired yet unique choice.

Spice – A rusty, warm orange-brown shade that brings the atmosphere of autumn forests, adding warmth to every manicure.

Let the harmony of light and nature shine in every brushstroke.

CN tip: use any of our magnets (double-sided, multiform, or Xtreme Force) with it!

Curing time: 2-3 min in UV, 1-2 min in LED (depending on lamp strength)

4ml

Free from
DI-HEMA
and HEMA
ingredients



NEW
COLORS!



New!
Maple



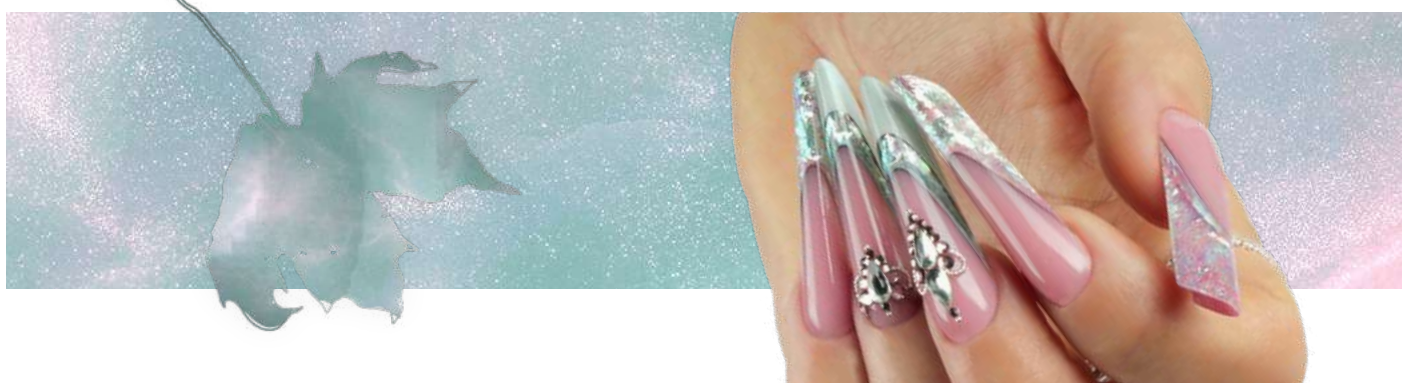
New!
Mulberry



New!
Pine



New!
Spice



FALL-WINTER 2025 NEW ARRIVALS!



NEW COLORS! ROYAL TOP GEL

The latest shades of Royal Top Gel designed for the autumn-winter season have arrived! Four stunning new colors that capture the mood of the season: from the passion of scarlet red to deep mauve and chocolate tones, everything you'll love about autumn is here.

First is **RT37 Scarlet Red**, a flaming scarlet, a reimagined classic red. A powerful, striking shade that will definitely make you stand out. **RT38 Pumpkin** is a bright, warm orange tone, a favorite of the pumpkin season. Cheerful, energetic, and eye-catching. **RT39 Indigo Kiss** is an indigo purple with a special grey depth. Elegant, modern, and distinctive, perfect for both subtle and bold styles. **RT40 Mocha Velvet** is a chocolate pudding shade of brown, with a clean, natural look that complements nude nails beautifully.

Royal Top Gel is a creamy, easy-to-apply, perfectly spreading formula, a softer, glassier version of the Royal Gels, making it a new favorite for salon nail professionals as it speeds up work and makes applying colors a joy. One layer is enough for full coverage! Non-cleansing, non-soluble, colored gel in a bottle.

Curing time: 2-3 min in UV, 1-2 min in LED (depending on lamp strength)

CN tip: You can enhance its shine by using a top gel. Can be used over almost any base, with gel polish only on base gels used for reinforcing technique.

CN tip: If it settles or separates during storage, do not shake due to thickness, stir with a decorating stick inside the bottle.

4ml



New! RT37
Scarlet Red



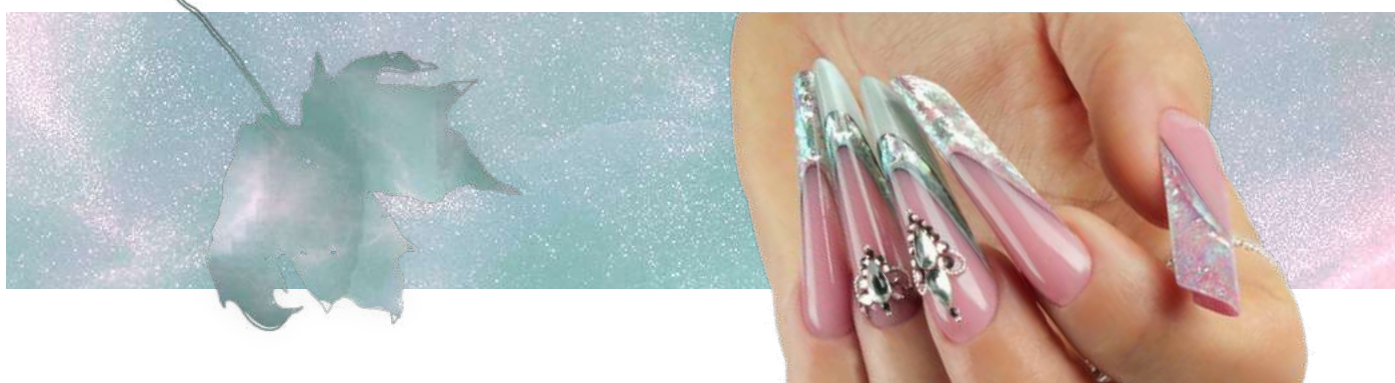
New! RT38
Pumpkin



New! RT39
Indigo Kiss



New! RT40
Mocha Velvet



FALL-WINTER 2025 NEW ARRIVALS!



SCENT PAIRS NAIL CARE OILS AND HAND, FOOT AND BODY LOTIONS

*Two returning favorites are available again, plus
a brand-new scent inspired by autumn has arrived!*

Our cuticle oils deeply nourish and regenerate the nail bed, while our lotions leave
the skin silky soft and fragrant without a greasy feeling.

Opium

A blend of dark flowers, smoky notes, and oriental spices that transports you to the mysterious world of the night. Passionate, powerful, and intriguingly elegant – for those who love impactful, memorable scents.

Oil 4 ml
Cream 30 ml
Cream 250 ml



Pumpkin Pie

A creamy pumpkin, warm cinnamon, and soft vanilla magical harmony. This scent wraps around you like a soft, warm blanket on cool autumn evenings. Perfect if you want a cozy, gently spiced yet feminine mood.

Oil 4 ml
Cream 30 ml
Cream 250 ml



Bellissima

A sweet, floral, light scent that brings a smile to your face. The essence of femininity, positive energy, and happiness all in one bottle. Fresh, refined, irresistible.

Oil 4 ml
Cream 30 ml
Cream 250 ml



FALL-WINTER 2025 NEW ARRIVALS!



NEW! NOVA CRYSTALS RHINESTONES

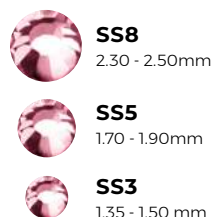
Iridescent, adhesive glass rhinestones for decorative nail designs. Their unique shades bring stunning light and elegance to every manicure. In addition to the popular colors among nail artists, new shades have arrived.

Light Purple – A delicate, light purple rhinestone that highlights the manicure with a soft, elegant sparkle. Perfect for romantic, pastel, or nude bases when you want a subtle feminine effect.

Lotus Purple – An intense, deep purple crystal with a special shine reminiscent of flower petals. A bold, eye-catching choice for darker tones or more extreme nail designs.

Available sizes: SS3, SS5, SS8

Packaging: 100 pcs/jar



CN Tip: For continuous patterns (where many rhinestones touch), surround with a Top gel using a O Short brush for an even more durable finish!

NOVA



NEW! SENS PINK REVERSE

The new generation of reverse tips has arrived! The SENS Reverse Pink Tip French Edge is an upgraded version of the classic reverse shape, featuring a deepened nail bed area for even more precise fit and a perfect French smile line. The result? A beautiful, natural C-curve, a modern and slim shape, and a professional finish every time. If you already loved our reverse tips, you'll fall in love with this one: new shape, new possibilities – same trusted SENS quality!

15 sizes – 150 pcs/box – for every hand shape and every technique.



NEW! NAIL STICKERS

Get ready for the autumn season and Halloween in style with three nail sticker designs, each with a different vibe for the season! All three products are excellent choices for quick and striking nail decoration, so every client can find a design that best suits their personality. The CN-23 features cheerful, charming patterns on 3D stickers that perfectly capture autumn playfulness. The CN-24 offers nature-inspired, warm-toned leaf motifs for those who appreciate the refined beauty of fall. Creepy Chic presents elegant gold horror elements on water decals, providing a sophisticated yet impactful look for the Halloween season.

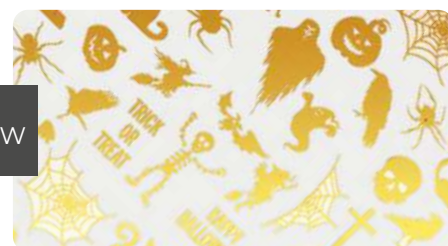


NEW

CN-23



CN-24



NEW

Creepy Chic

FALL-WINTER 2025 NEW ARRIVALS!



NEW!

2026 PLANNER COVERS

*Weekly layout, 2026 nail tech planners
in two stunning designs*

Discover our 2026 planners featuring two gorgeous cover options: a romantic pink marble pattern and a dazzling butterfly holographic design!

Both versions perfectly embody femininity and uniqueness – made for those who not only want to stay organized, but also express their style every day.

The planners are covered in soft, faux leather that's pleasant to the touch, with a snap closure and a built-in pen holder for extra practicality. Inner pockets are perfect for storing business cards, appointment cards, or other small essentials.

Thanks to their compact size (117 mm x 185 mm), they easily fit into most handbags – so you can jot down your clients' next appointments anytime, anywhere!



NEW! CN & SENS SCISSOR HOLDER CASE

New! Discover the Crystal Nails scissor holder case in two charming shades of pink, or choose the SENS by Crystal Nails version in the classic, elegant black – a practical and stylish solution for storing your scissors! Made from easy-to-clean faux leather, it helps protect your tools from scratches while adding a chic touch to your nail kit.

Pick the color that suits you best and keep your tools organized – simply, yet tastefully!

